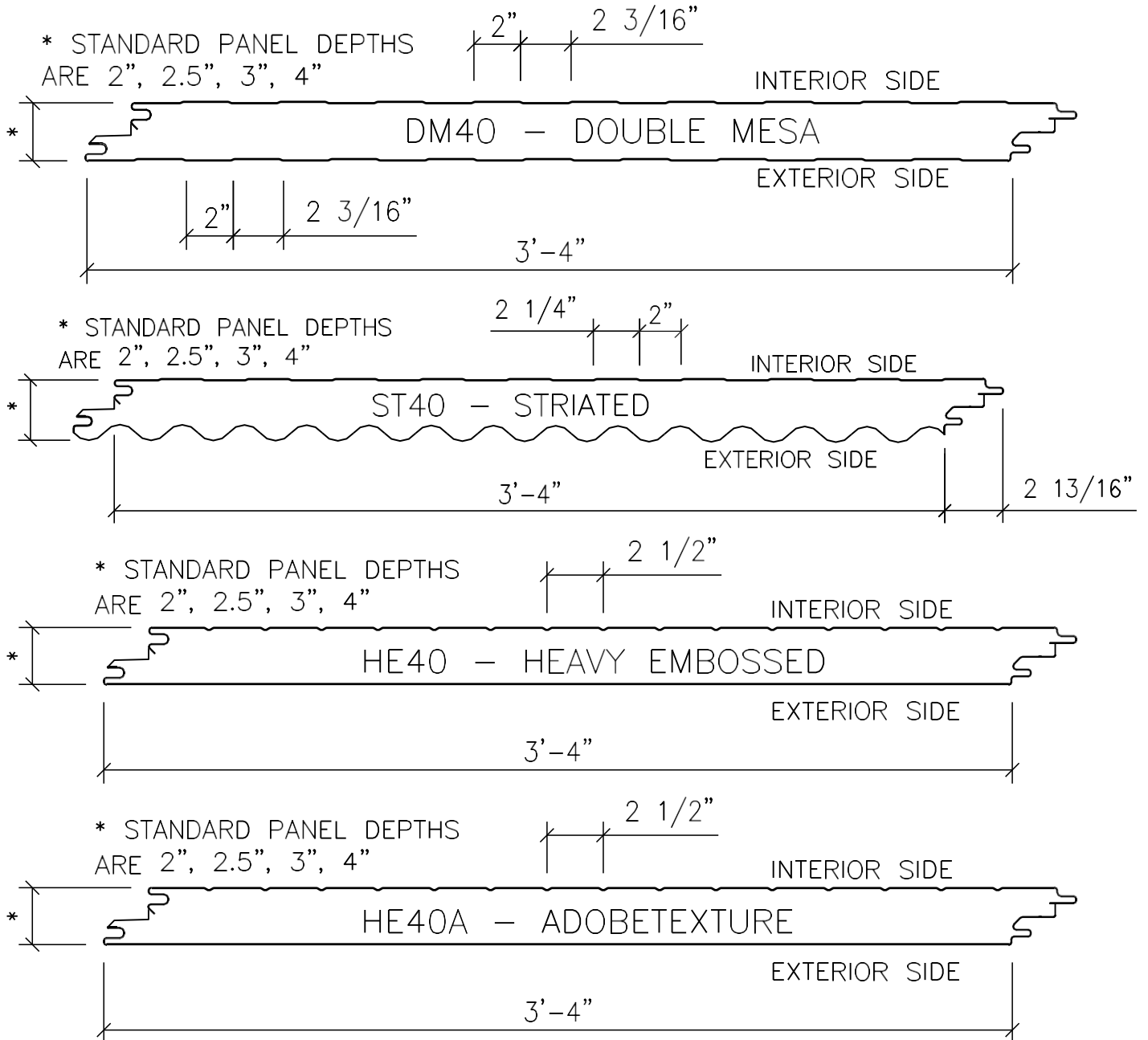


**INSULATED METAL WALL PANEL SYSTEMS TABLE OF CONTENTS**

Insulated Wall Panel Profiles .....	2
Insulated Metal Wall Panel Span Tables .....	4
2" Panel Thickness – Standard (2) Fasteners .....	4
2" Panel Thickness – Optional (3) Fasteners .....	5
2-1/2" Panel Thickness – Standard (2) Fasteners .....	6
2-1/2" Panel Thickness – Optional (3) Fasteners .....	7
3" Panel Thickness – Standard (2) Fasteners .....	8
3" Panel Thickness – Optional (3) Fasteners .....	9
4" Panel Thickness – Standard (2) Fasteners .....	10
4" Panel Thickness – Optional (3) Fasteners .....	11
Standard Details .....	12
GB2300 - Base Trim.....	12
GA2042 - Horizontal Joint .....	13
GC2021PE - Outside Corner Trim.....	14
GC2051PE - Inside Corner Trim .....	15
GD2020PE - Jamb Trim .....	16
GD2040PE - Header Trim .....	17
GD2070PE - Sill Trim .....	18

**INSULATED WALL PANEL PROFILES**

The below insulated metal wall panel system panels are available as components of one of Nucor Building Systems' Standard Metal Wall and Insulated Wall Systems.



Information about the available panel thickness options, R and U factors, exterior and interior colors and finishes, available panel lengths, performance and testing information, and much more is available at the Nucor Building Systems website at the below links.

[Insulated Metal Wall Panel Systems](#)

The following pages outline span capacities for typical panel configurations as well as provide Nucor standard details for these wall systems.

**INSULATED METAL WALL PANEL SPAN TABLES**
**2" PANEL THICKNESS – STANDARD (2) FASTENERS**

<b>2" Insulated Metal Wall Panels (All Profiles)</b>			<b>– 26 Gauge Exterior/Interior – Standard (2) Fasteners</b>						
<b>Simple Span</b>									
Span (ft.)	Panel Capacity Pressure/Suction (psf)	Deflection L/180	Wind Pressure/Suction Capacity (psf) per Support Thickness						
			0.060	0.067	0.075	0.089	0.099	0.105	0.120
5	65	n/c	65	65	65	65	65	65	65
6	49	n/c	49	49	49	49	49	49	49
7	38	n/c	38	38	38	38	38	38	38
8	30	n/c	30	30	30	30	30	30	30
9	24	n/c	24	24	24	24	24	24	24
10	19	n/c	19	19	19	19	19	19	19
11	15	n/c	15	15	15	15	15	15	15
12	13	n/c	13	13	13	13	13	13	13
<b>Multiple (2+) Spans</b>									
Span (ft.)	Panel Capacity Pressure/Suction (psf)	Deflection L/180	Wind Pressure/Suction Capacity (psf) per Support Thickness						
			0.060	0.067	0.075	0.089	0.099	0.105	0.120
5	70	n/c	28	32	36	47	50	50	50
6	55	n/c	23	26	30	39	42	42	42
7	44	n/c	20	22	26	33	36	36	36
8	36	n/c	17	20	22	29	31	31	31
9	30	n/c	15	17	20	26	28	28	28
10	25	n/c	14	16	18	23	25	25	25
11	21	n/c	12	14	16	21	21	21	21
12	18	n/c	11	13	15	18	18	18	18

Insulated wall panel deflections are held to L/180. Contact the engineering team for minimum panel lengths, span capacities with different exterior or interior panel thicknesses, fastener configurations, or parapet conditions.

**2" PANEL THICKNESS – OPTIONAL (3) FASTENERS**

<b>2" Insulated Metal Wall Panels (All Profiles)</b>			<b>– 26 Gauge Exterior/Interior – Optional (3) Fasteners</b>						
<b>Simple Span</b>									
Span (ft.)	Panel Capacity Pressure/Suction (psf)	Deflection L/180	Wind Pressure/Suction Capacity (psf) per Support Thickness						
			0.060	0.067	0.075	0.089	0.099	0.105	0.120
5	65	n/c	65	65	65	65	65	65	65
6	49	n/c	49	49	49	49	49	49	49
7	38	n/c	38	38	38	38	38	38	38
8	30	n/c	30	30	30	30	30	30	30
9	24	n/c	24	24	24	24	24	24	24
10	19	n/c	19	19	19	19	19	19	19
11	15	n/c	15	15	15	15	15	15	15
12	13	n/c	13	13	13	13	13	13	13
<b>Multiple (2+) Spans</b>									
Span (ft.)	Panel Capacity Pressure/Suction (psf)	Deflection L/180	Wind Pressure/Suction Capacity (psf) per Support Thickness						
			0.060	0.067	0.075	0.089	0.099	0.105	0.120
5	70	n/c	42	48	50	50	50	50	50
6	55	n/c	35	40	42	42	42	42	42
7	44	n/c	30	34	36	36	36	36	36
8	36	n/c	26	30	31	31	31	31	31
9	30	n/c	23	26	28	28	28	28	28
10	25	n/c	21	24	25	25	25	25	25
11	21	n/c	19	21	21	21	21	21	21
12	18	n/c	17	18	18	18	18	18	18

Insulated wall panel deflections are held to L/180. Contact the engineering team for minimum panel lengths, span capacities with different exterior or interior panel thicknesses, fastener configurations, or parapet conditions.

**2-1/2" PANEL THICKNESS – STANDARD (2) FASTENERS**

<b>2-1/2" Insulated Metal Wall Panels (All Profiles)</b>			<b>– 26 Gauge Exterior/Interior – Standard (2) Fasteners</b>						
<b>Simple Span</b>									
Span (ft.)	Panel Capacity Pressure/Suction (psf)	Deflection L/180	Wind Pressure/Suction Capacity (psf) per Support Thickness						
			0.060	0.067	0.075	0.089	0.099	0.105	0.120
5	85	n/c	70	80	85	85	85	85	85
6	65	n/c	58	65	65	65	65	65	65
7	51	n/c	50	51	51	51	51	51	51
8	41	n/c	41	41	41	41	41	41	41
9	33	n/c	33	33	33	33	33	33	33
10	27	n/c	27	27	27	27	27	27	27
11	22	n/c	22	22	22	22	22	22	22
12	18	n/c	18	18	18	18	18	18	18
<b>Multiple (2+) Spans</b>									
Span (ft.)	Panel Capacity Pressure/Suction (psf)	Deflection L/180	Wind Pressure/Suction Capacity (psf) per Support Thickness						
			0.060	0.067	0.075	0.089	0.099	0.105	0.120
5	90	n/c	28	32	36	47	50	50	50
6	72	n/c	23	26	30	39	42	42	42
7	58	n/c	20	22	26	33	36	36	36
8	48	n/c	17	20	22	29	31	31	31
9	40	n/c	15	17	20	26	28	28	28
10	34	n/c	14	16	18	23	25	25	25
11	29	n/c	12	14	16	21	22	22	22
12	24	n/c	11	13	15	19	21	21	21

Insulated wall panel deflections are held to L/180. Contact the engineering team for minimum panel lengths, span capacities with different exterior or interior panel thicknesses, fastener configurations, or parapet conditions.

**2-1/2" PANEL THICKNESS – OPTIONAL (3) FASTENERS**

<b>2-1/2" Insulated Metal Wall Panels (All Profiles)</b>			<b>– 26 Gauge Exterior/Interior – Optional (3) Fasteners</b>						
<b>Simple Span</b>									
Span (ft.)	Panel Capacity Pressure/Suction (psf)	Deflection L/180	Wind Pressure/Suction Capacity (psf) per Support Thickness						
			0.060	0.067	0.075	0.089	0.099	0.105	0.120
5	85	n/c	85	85	85	85	85	85	85
6	65	n/c	65	65	65	65	65	65	65
7	51	n/c	51	51	51	51	51	51	51
8	41	n/c	41	41	41	41	41	41	41
9	33	n/c	33	33	33	33	33	33	33
10	27	n/c	27	27	27	27	27	27	27
11	22	n/c	22	22	22	22	22	22	22
12	18	n/c	18	18	18	18	18	18	18
<b>Multiple (2+) Spans</b>									
Span (ft.)	Panel Capacity Pressure/Suction (psf)	Deflection L/180	Wind Pressure/Suction Capacity (psf) per Support Thickness						
			0.060	0.067	0.075	0.089	0.099	0.105	0.120
5	90	n/c	42	48	50	50	50	50	50
6	72	n/c	35	40	42	42	42	42	42
7	58	n/c	30	34	36	36	36	36	36
8	48	n/c	26	30	31	31	31	31	31
9	40	n/c	23	26	28	28	28	28	28
10	34	n/c	21	24	25	25	25	25	25
11	29	n/c	19	21	22	22	22	22	22
12	24	n/c	17	20	21	21	21	21	21

Insulated wall panel deflections are held to L/180. Contact the engineering team for minimum panel lengths, span capacities with different exterior or interior panel thicknesses, fastener configurations, or parapet conditions.

**3" PANEL THICKNESS – STANDARD (2) FASTENERS**

<b>3" Insulated Metal Wall Panels (All Profiles)</b>			<b>– 26 Gauge Exterior/Interior – Standard (2) Fasteners</b>						
<b>Simple Span</b>									
Span (ft.)	Panel Capacity Pressure/Suction (psf)	Deflection L/180	Wind Pressure/Suction Capacity (psf) per Support Thickness						
			0.060	0.067	0.075	0.089	0.099	0.105	0.120
5	106	n/c	70	80	91	106	106	106	106
6	82	n/c	58	66	76	82	82	82	82
7	65	n/c	50	57	65	65	65	65	65
8	53	n/c	44	50	53	53	53	53	53
9	43	n/c	39	43	43	43	43	43	43
10	35	n/c	35	35	35	35	35	35	35
11	29	n/c	29	29	29	29	29	29	29
12	25	n/c	25	25	25	25	25	25	25
<b>Multiple (2+) Spans</b>									
Span (ft.)	Panel Capacity Pressure/Suction (psf)	Deflection L/180	Wind Pressure/Suction Capacity (psf) per Support Thickness						
			0.060	0.067	0.075	0.089	0.099	0.105	0.120
5	111	n/c	28	32	36	47	50	50	50
6	89	n/c	23	26	30	39	42	42	42
7	72	n/c	20	22	26	33	36	36	36
8	60	n/c	17	20	22	29	31	31	31
9	51	n/c	15	17	20	26	28	28	28
10	43	n/c	14	16	18	23	25	25	25
11	37	n/c	12	14	16	21	22	22	22
12	32	n/c	11	13	15	19	21	21	21

Insulated wall panel deflections are held to L/180. Contact the engineering team for minimum panel lengths, span capacities with different exterior or interior panel thicknesses, fastener configurations, or parapet conditions.



**3" PANEL THICKNESS – OPTIONAL (3) FASTENERS**

<b>3" Insulated Metal Wall Panels (All Profiles)</b>			<b>– 26 Gauge Exterior/Interior – Optional (3) Fasteners</b>						
<b>Simple Span</b>									
Span (ft.)	Panel Capacity Pressure/Suction (psf)	Deflection L/180	Wind Pressure/Suction Capacity (psf) per Support Thickness						
			0.060	0.067	0.075	0.089	0.099	0.105	0.120
5	106	n/c	105	106	106	106	106	106	106
6	82	n/c	82	82	82	82	82	82	82
7	65	n/c	65	65	65	65	65	65	65
8	53	n/c	53	53	53	53	53	53	53
9	43	n/c	43	43	43	43	43	43	43
10	35	n/c	35	35	35	35	35	35	35
11	29	n/c	29	29	29	29	29	29	29
12	25	n/c	25	25	25	25	25	25	25
<b>Multiple (2+) Spans</b>									
Span (ft.)	Panel Capacity Pressure/Suction (psf)	Deflection L/180	Wind Pressure/Suction Capacity (psf) per Support Thickness						
			0.060	0.067	0.075	0.089	0.099	0.105	0.120
5	111	n/c	42	48	50	50	50	50	50
6	89	n/c	35	40	42	42	42	42	42
7	72	n/c	30	34	36	36	36	36	36
8	60	n/c	26	30	31	31	31	31	31
9	51	n/c	23	26	28	28	28	28	28
10	43	n/c	21	24	25	25	25	25	25
11	37	n/c	19	21	22	22	22	22	22
12	32	n/c	17	20	21	21	21	21	21

Insulated wall panel deflections are held to L/180. Contact the engineering team for minimum panel lengths, span capacities with different exterior or interior panel thicknesses, fastener configurations, or parapet conditions.

**4" PANEL THICKNESS – STANDARD (2) FASTENERS**

<b>4" Insulated Metal Wall Panels (All Profiles)</b>			<b>– 26 Gauge Exterior/Interior – Standard (2) Fasteners</b>						
<b>Simple Span</b>									
Span (ft.)	Panel Capacity Pressure/Suction (psf)	Deflection L/180	Wind Pressure/Suction Capacity (psf) per Support Thickness						
			0.060	0.067	0.075	0.089	0.099	0.105	0.120
5	147	n/c	70	80	91	118	126	126	126
6	116	n/c	58	66	76	99	105	105	105
7	94	n/c	50	57	65	84	90	90	90
8	77	n/c	44	50	57	74	77	77	77
9	64	n/c	39	44	50	64	64	64	64
10	53	n/c	35	40	45	53	53	53	53
11	45	n/c	32	36	41	45	45	45	45
12	38	n/c	29	33	38	38	38	38	38
<b>Multiple (2+) Spans</b>									
Span (ft.)	Panel Capacity Pressure/Suction (psf)	Deflection L/180	Wind Pressure/Suction Capacity (psf) per Support Thickness						
			0.060	0.067	0.075	0.089	0.099	0.105	0.120
5	153	n/c	28	32	36	47	50	50	50
6	123	n/c	23	26	30	39	42	42	42
7	101	n/c	20	22	26	33	36	36	36
8	85	n/c	17	20	22	29	31	31	31
9	72	n/c	15	17	20	26	28	28	28
10	62	n/c	14	16	18	23	25	25	25
11	54	n/c	12	14	16	21	22	22	22
12	47	n/c	11	13	15	19	21	21	21

Insulated wall panel deflections are held to L/180. Contact the engineering team for minimum panel lengths, span capacities with different exterior or interior panel thicknesses, fastener configurations, or parapet conditions.

**4" PANEL THICKNESS – OPTIONAL (3) FASTENERS**

4" Insulated Metal Wall Panels (All Profiles)			– 26 Gauge Exterior/Interior – Optional (3) Fasteners						
Simple Span									
Span (ft.)	Panel Capacity Pressure/Suction (psf)	Deflection L/180	Wind Pressure/Suction Capacity (psf) per Support Thickness						
			0.060	0.067	0.075	0.089	0.099	0.105	0.120
5	147	n/c	105	120	126	126	126	126	126
6	116	n/c	88	100	105	105	105	105	105
7	94	n/c	75	86	90	90	90	90	90
8	77	n/c	66	75	77	77	77	77	77
9	64	n/c	58	64	64	64	64	64	64
10	53	n/c	52	53	53	53	53	53	53
11	45	n/c	45	45	45	45	45	45	45
12	38	n/c	38	38	38	38	38	38	38
Multiple (2+) Spans									
Span (ft.)	Panel Capacity Pressure/Suction (psf)	Deflection L/180	Wind Pressure/Suction Capacity (psf) per Support Thickness						
			0.060	0.067	0.075	0.089	0.099	0.105	0.120
5	153	n/c	42	48	50	50	50	50	50
6	123	n/c	35	40	42	42	42	42	42
7	101	n/c	30	34	36	36	36	36	36
8	85	n/c	26	30	31	31	31	31	31
9	72	n/c	23	26	28	28	28	28	28
10	62	n/c	21	24	25	25	25	25	25
11	54	n/c	19	21	22	22	22	22	22
12	47	n/c	17	20	21	21	21	21	21

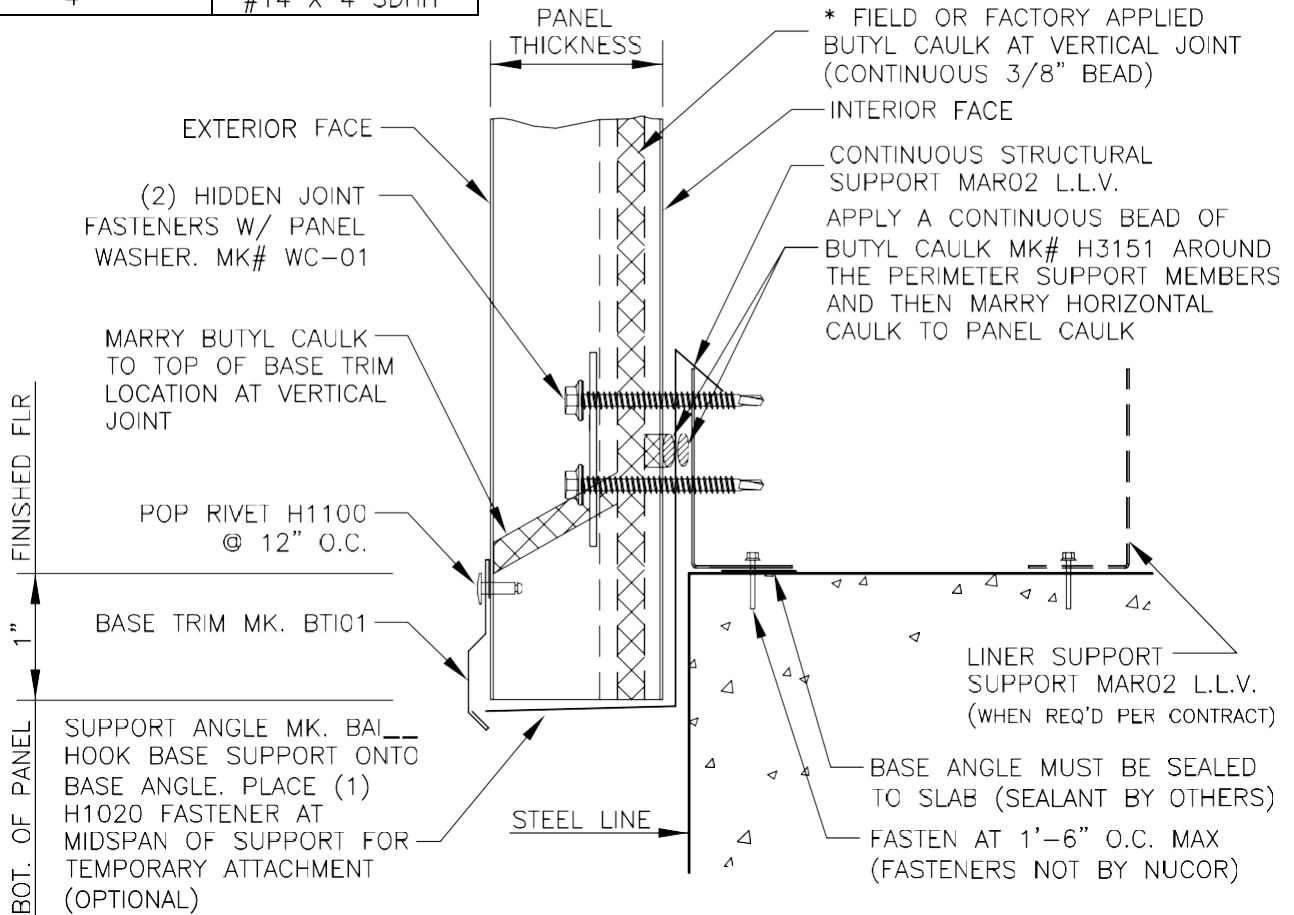
Insulated wall panel deflections are held to L/180. Contact the engineering team for minimum panel lengths, span capacities with different exterior or interior panel thicknesses, fastener configurations, or parapet conditions.

**STANDARD DETAILS**

**GB2300 - BASE TRIM**

PANEL THICKNESS	HIDDEN FASTENER
2"	#14 X 2 SDHH
2 1/2"	#14 X 3 SDHH
3"	#14 X 3 SDHH
4"	#14 X 4 SDHH

\* ENSURE CAULK IS CONTINUOUS, IF NO CAULK IS PRESENT OR IF CAULK IS NOT CONTINUOUS, FIELD APPLY CONTINUOUS CAULK MK# H3151



**BASE TRIM DETAIL**

BASE TRIM WITH PANEL SUPPORT  
SEE INSULATED WALL PANEL SHEETING ERECTION NOTES  
FOR PANEL FASTENER LOCATIONS.

**GB2300**

- Base channel and structural cees can be substituted for the base angle.

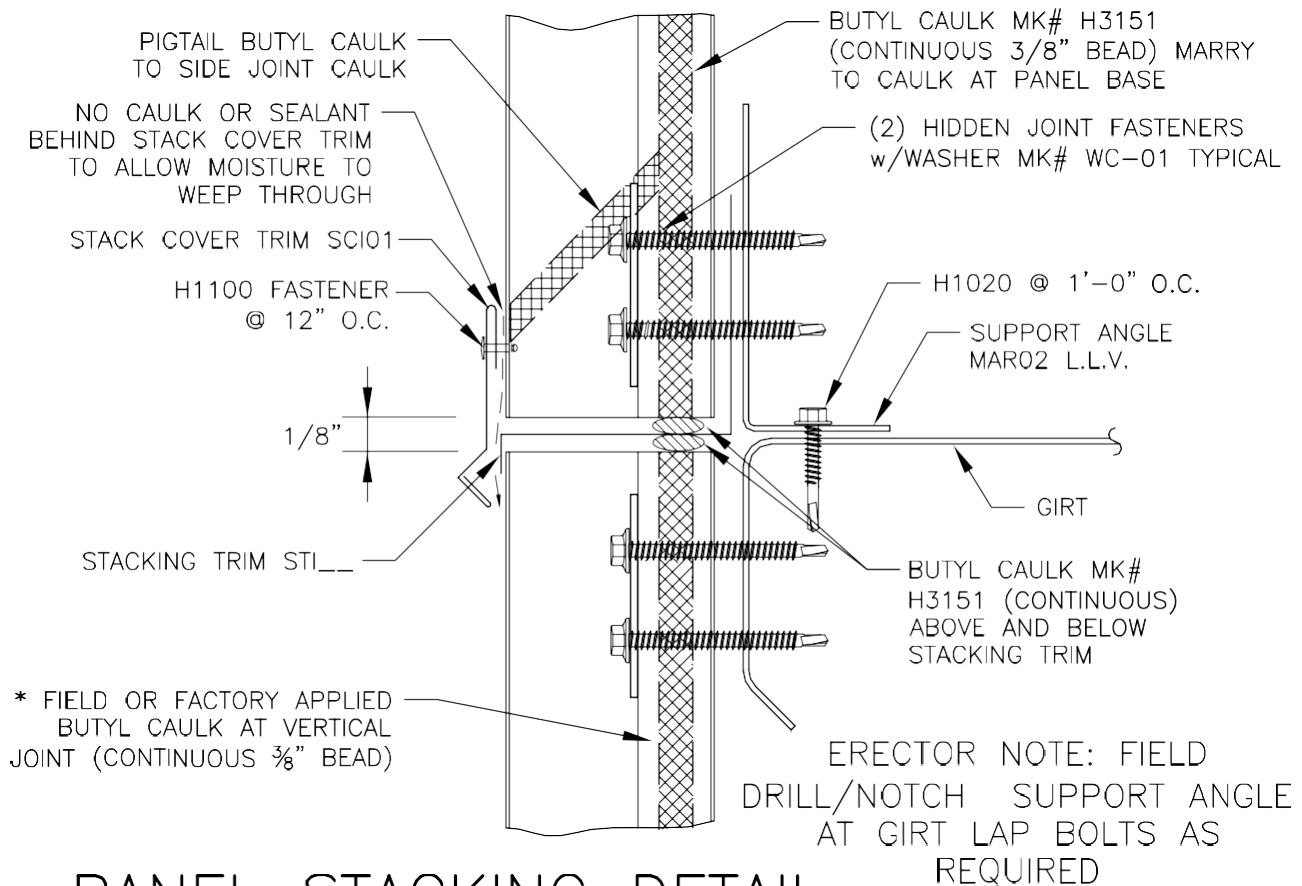
LAST REVISION  
DATE: 02/16/15  
BY: AK CHK: EGB

DETAIL NAME IF APPLICABLE  
**GB2300.dwg**

**6.7.12**

**GA2042 - HORIZONTAL JOINT**

PANEL THICKNESS	HIDDEN FASTENER	UNTIL WALL PANELS ARE INSTALLED, POP RIVETS ARE TO BE USED FOR TEMPORARY INTALLATION OF STACKING TRIM.	* ENSURE CAULK IS CONTINUOUS, IF NO CAULK IS PRESENT OR IF CAULK IS NOT CONTINUOUS, FIELD APPLY CONTINUOUS CAULK H3151
2"	#14 X 2 SDHH		
2 1/2"	#14 X 3 SDHH		
3"	#14 X 3 SDHH		
4"	#14 X 4 SDHH		



**PANEL STACKING DETAIL**

INSULATED WALL PANELS

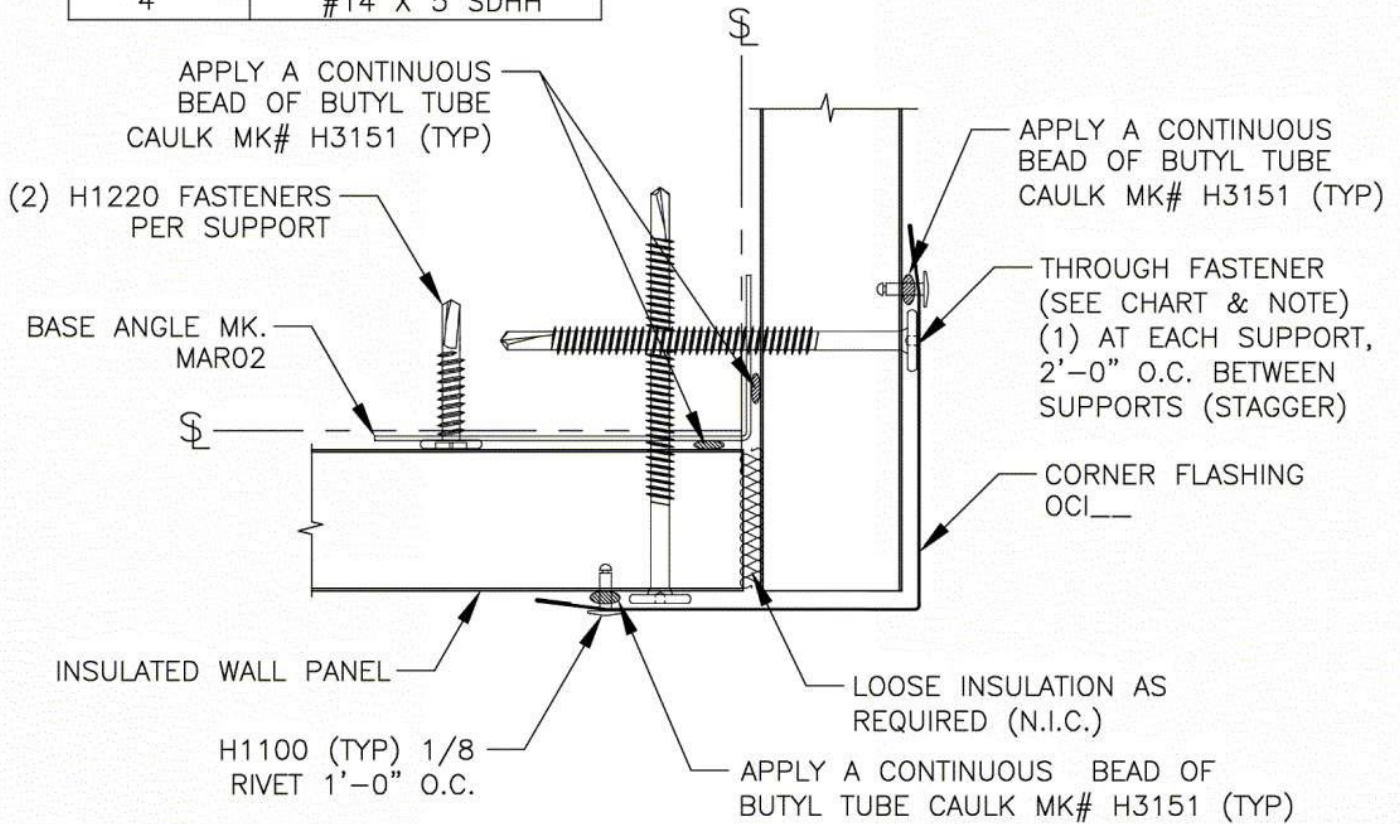
PANEL SHIMMING MAY BE REQUIRED. PANEL SHIMS BY OTHERS

**GA2042**

This is the *standard* splice when panel lengths violate the Solar Load Chart length requirements. An alternate Exterior Relief Cut is available if you prefer longer length panels.

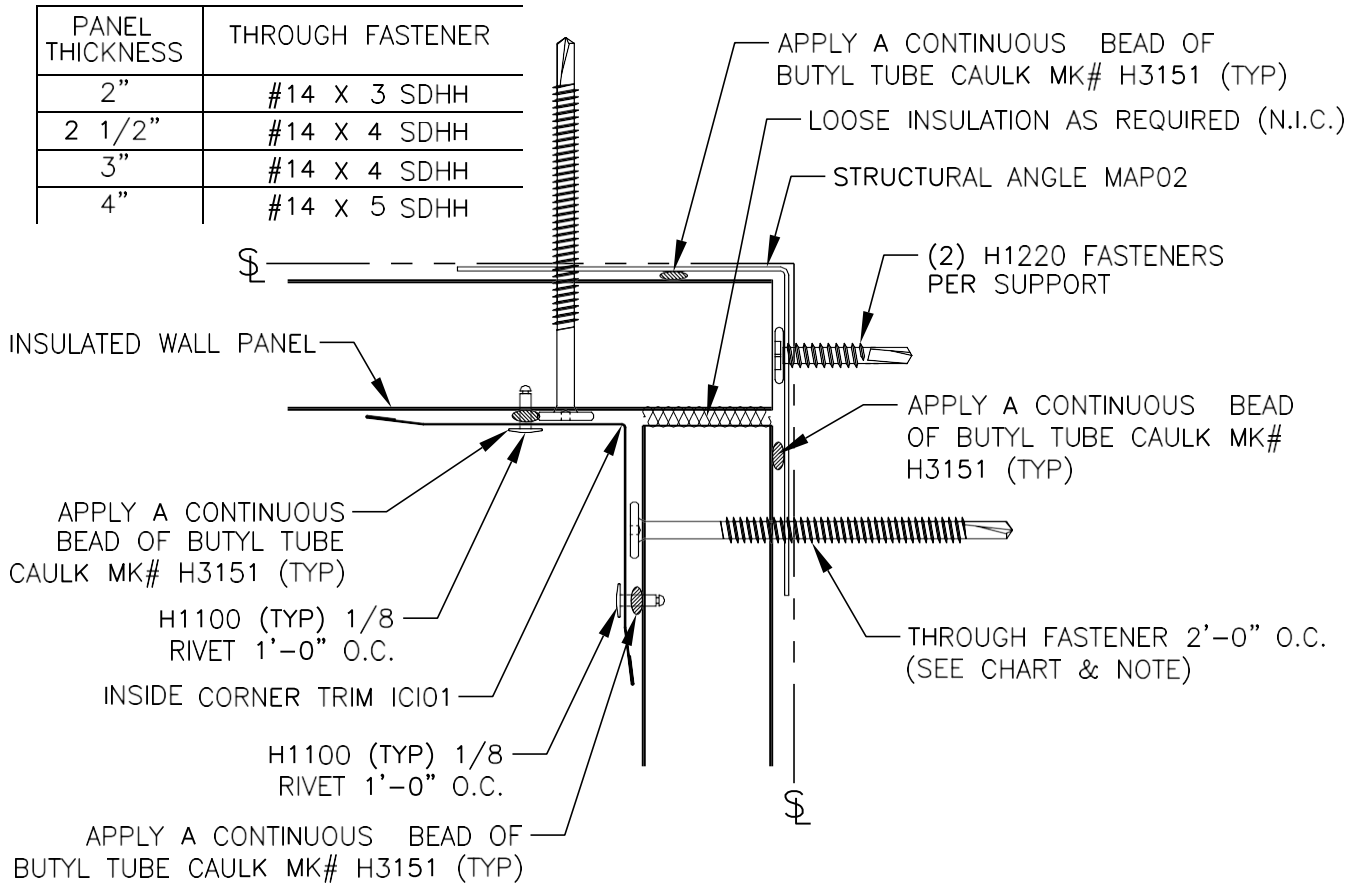
**GC2021PE - OUTSIDE CORNER TRIM**

PANEL THICKNESS	THROUGH FASTENER
2"	#14 X 3 SDHH
2 1/2"	#14 X 4 SDHH
3"	#14 X 4 SDHH
4"	#14 X 5 SDHH



**OUTSIDE CORNER DETAIL**

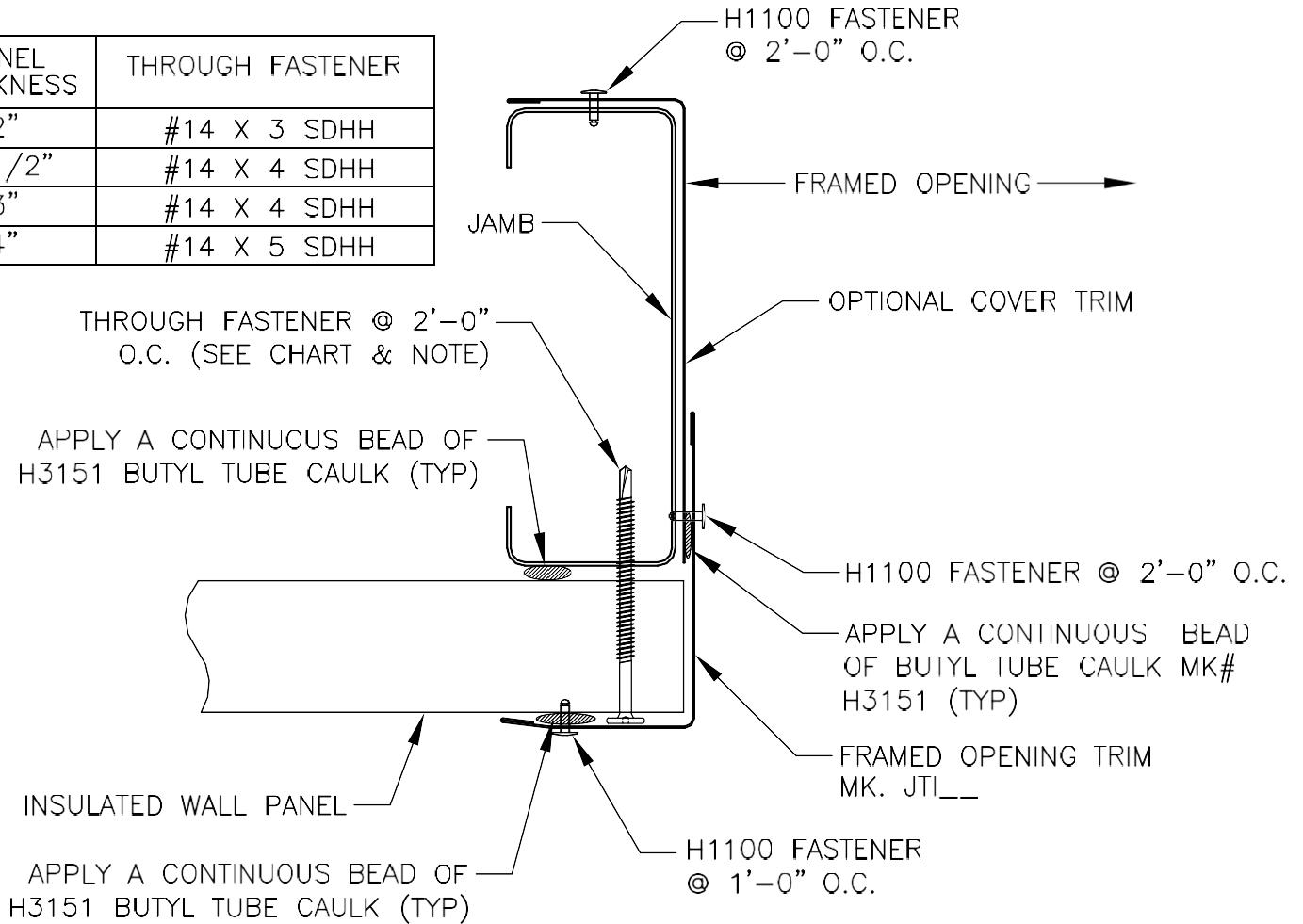
**GC2051PE - INSIDE CORNER TRIM**



**INSIDE CORNER DETAIL**

**GD2020PE - JAMB TRIM**

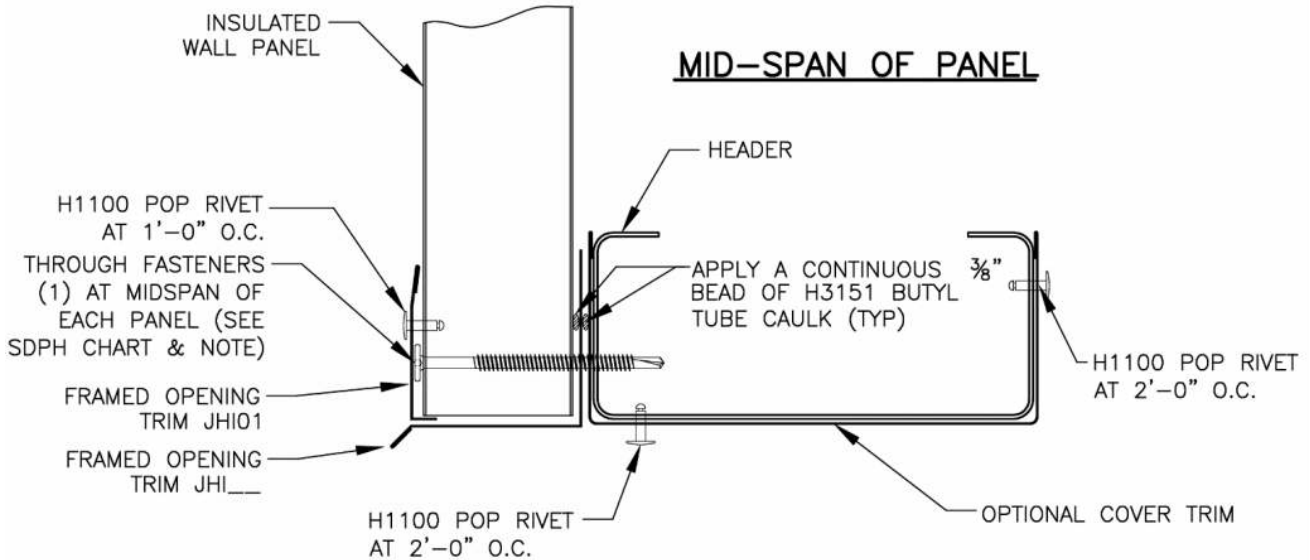
PANEL THICKNESS	THROUGH FASTENER
2"	#14 X 3 SDHH
2 1/2"	#14 X 4 SDHH
3"	#14 X 4 SDHH
4"	#14 X 5 SDHH



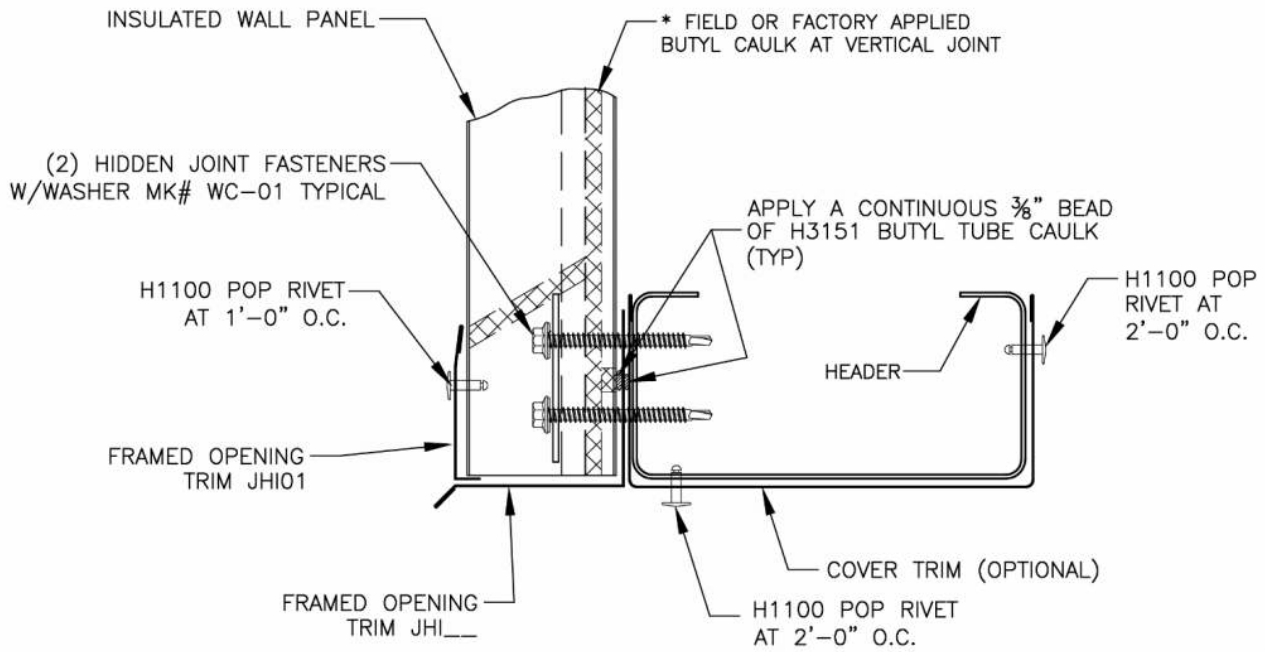
**JAMB DETAIL**



**GD2040PE - HEADER TRIM**



PANEL THICKNESS	THROUGH FASTENER	HIDDEN FASTENER
2"	#14 X 3 SDPH	#14 X 2 SDHH
2 1/2"	#14 X 4 SDPH	#14 X 3 SDHH
3"	#14 X 4 SDPH	#14 X 3 SDHH
4"	#14 X 5 SDPH	#14 X 4 SDHH



**SIDE JOINT OF PANEL**

**GD2070PE - SILL TRIM**

